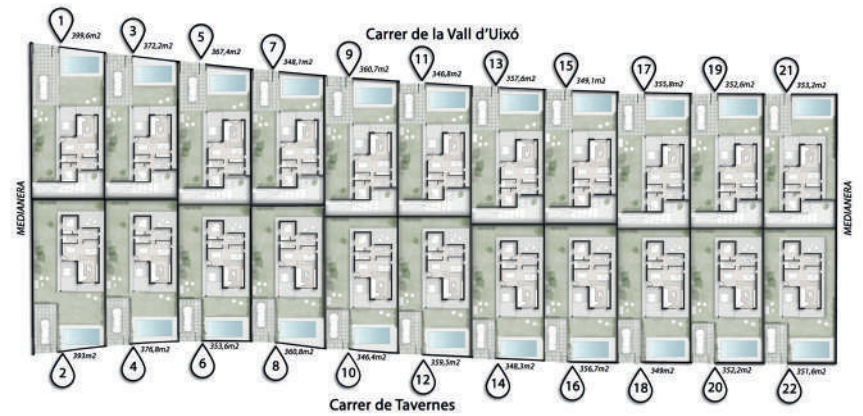
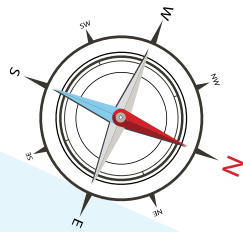
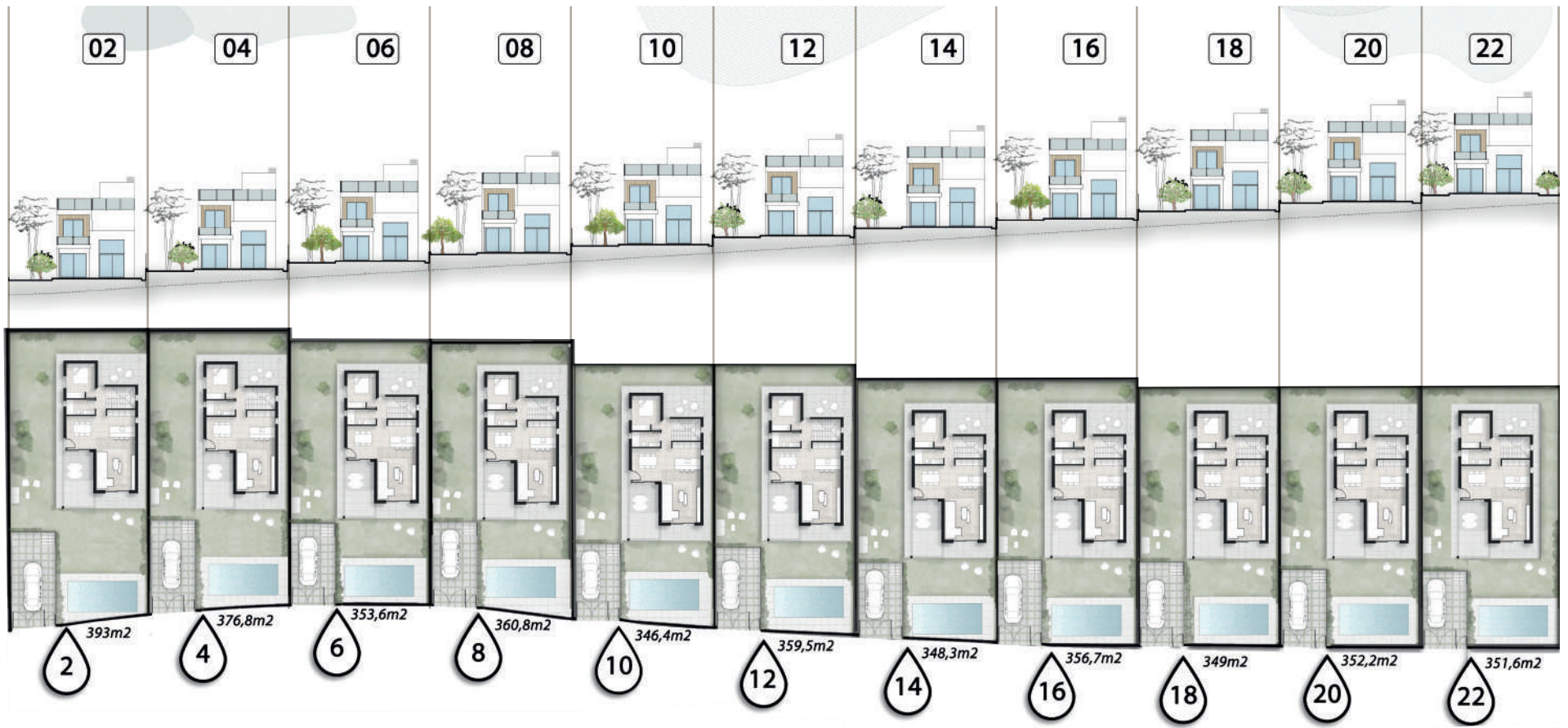
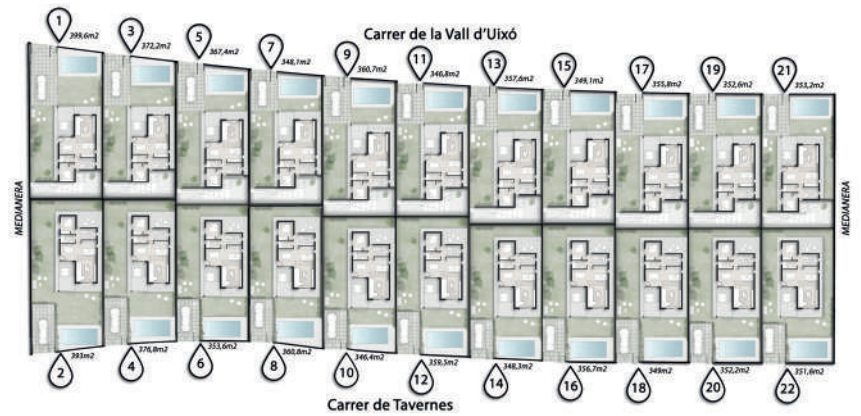
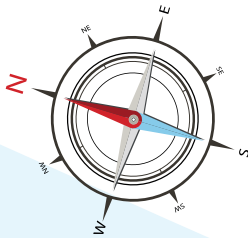
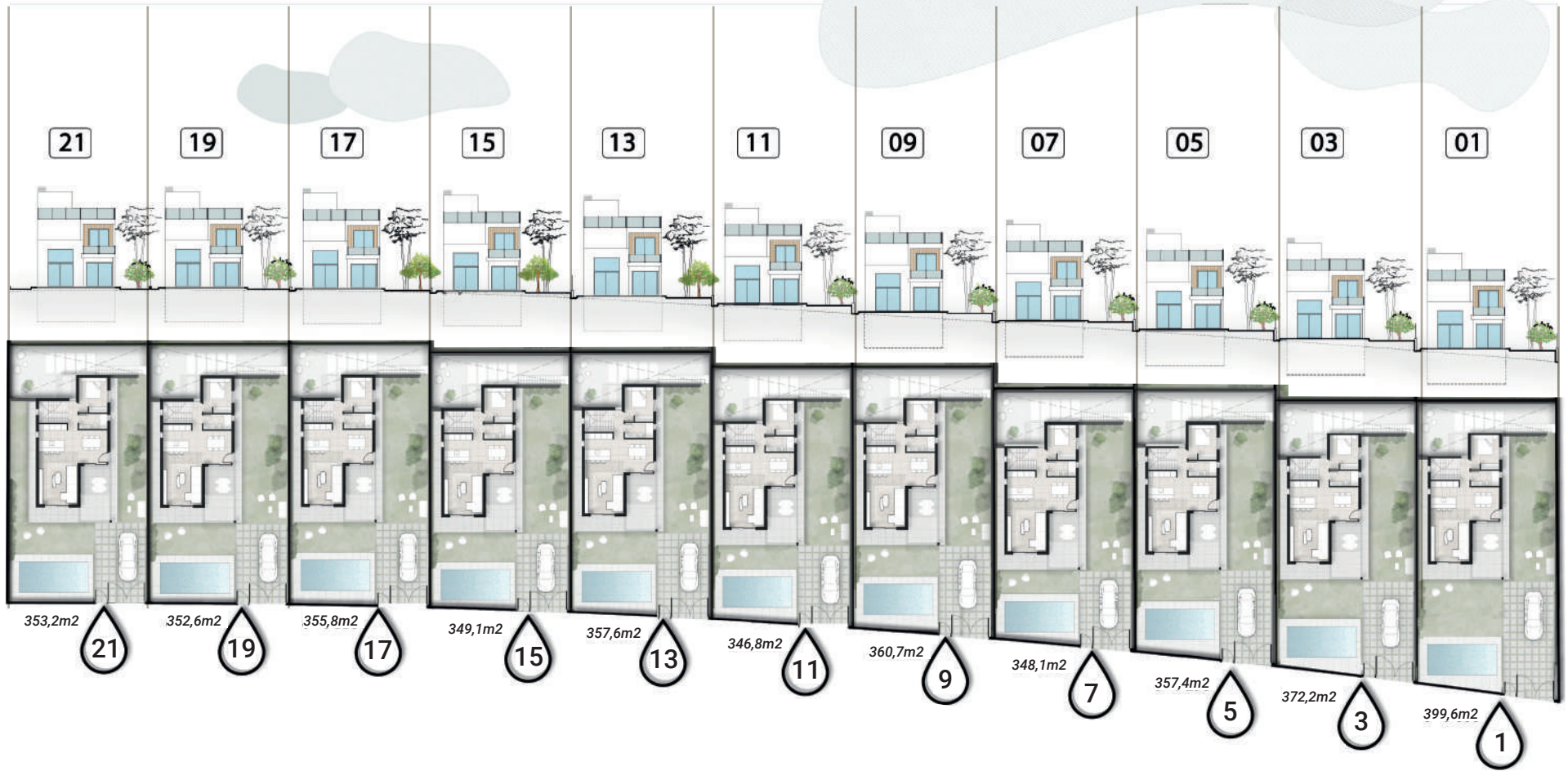


# Carrer de Tavernes



# Carrer la Vall d'Uixò



## GROSS FLOOR AREA

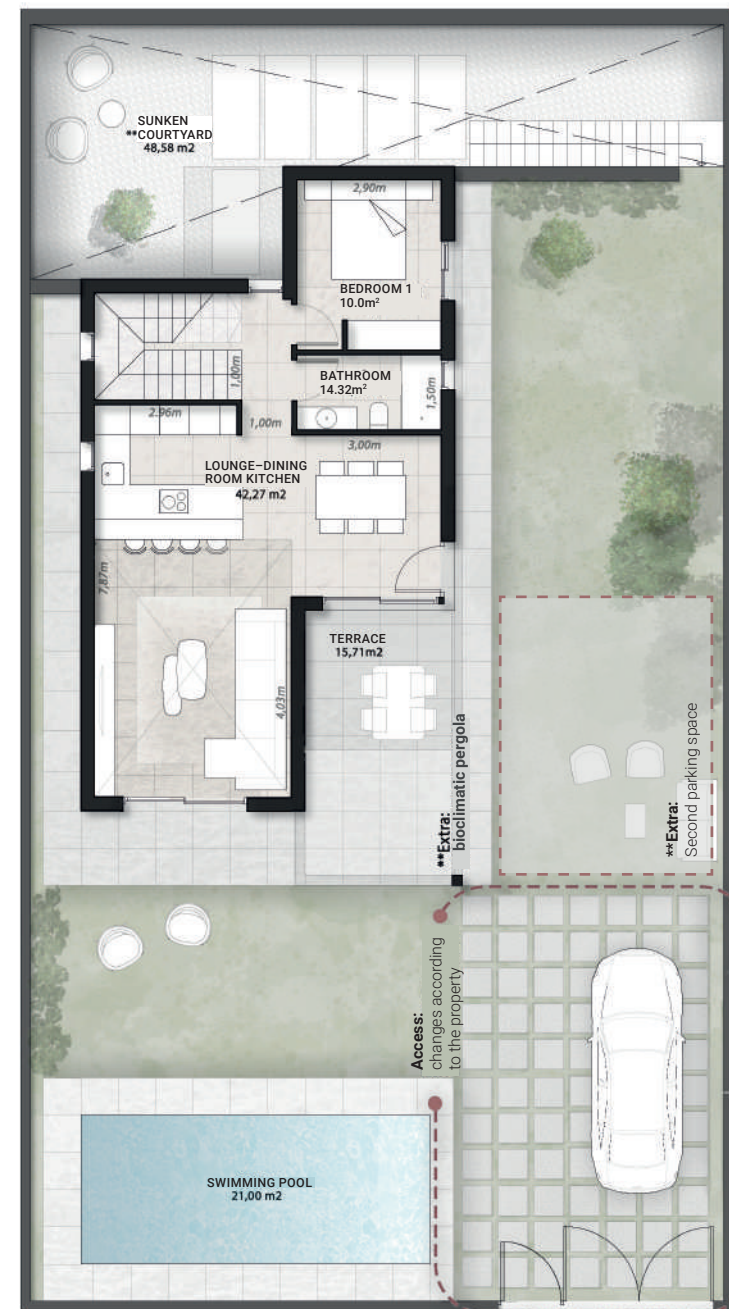
### TOTAL SURFACE AREA

<b>BASEMENT**</b>	92.61 m <sup>2</sup>
GROUND FLOOR	78.90 m <sup>2</sup>
FIRST FLOOR	48.70 m <sup>2</sup>

### TOTAL

GROSS FLOOR AREA Odd number houses (with basement)	220.21 m <sup>2</sup>
GROSS FLOOR AREA Even number houses (without basement)	127.60 m <sup>2</sup>
SIZE OF PLOT OF LAND	Consult m <sup>2</sup>

## Ground floor



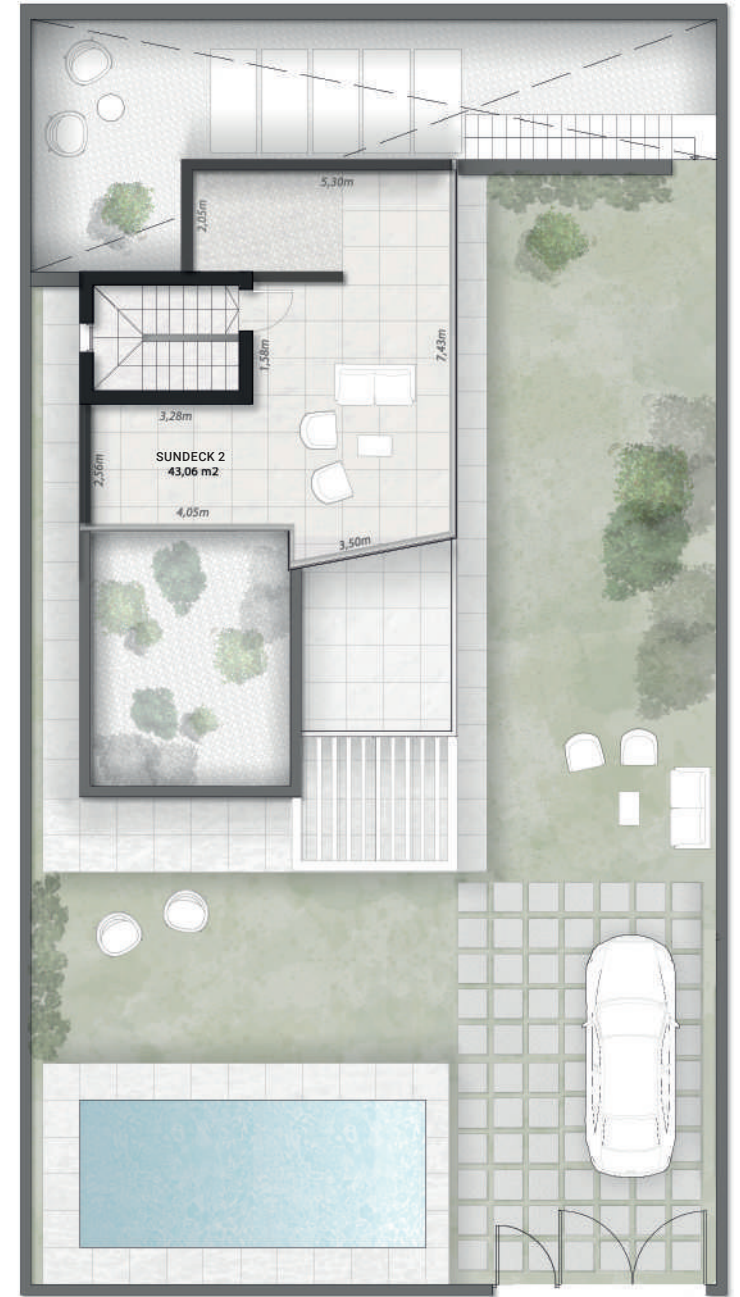
### Please note:

This document should be used as a guide only; changes might be made to it as the technical construction project progresses. The villas will be built in line with the building specifications established by the site manager without this affecting the quality. The furniture, gardening and other decorative elements that appear in the plans, except those specifically included in the furnishings, are simply to give you an idea of how you can decorate your house and they do not come with the property.

# First floor



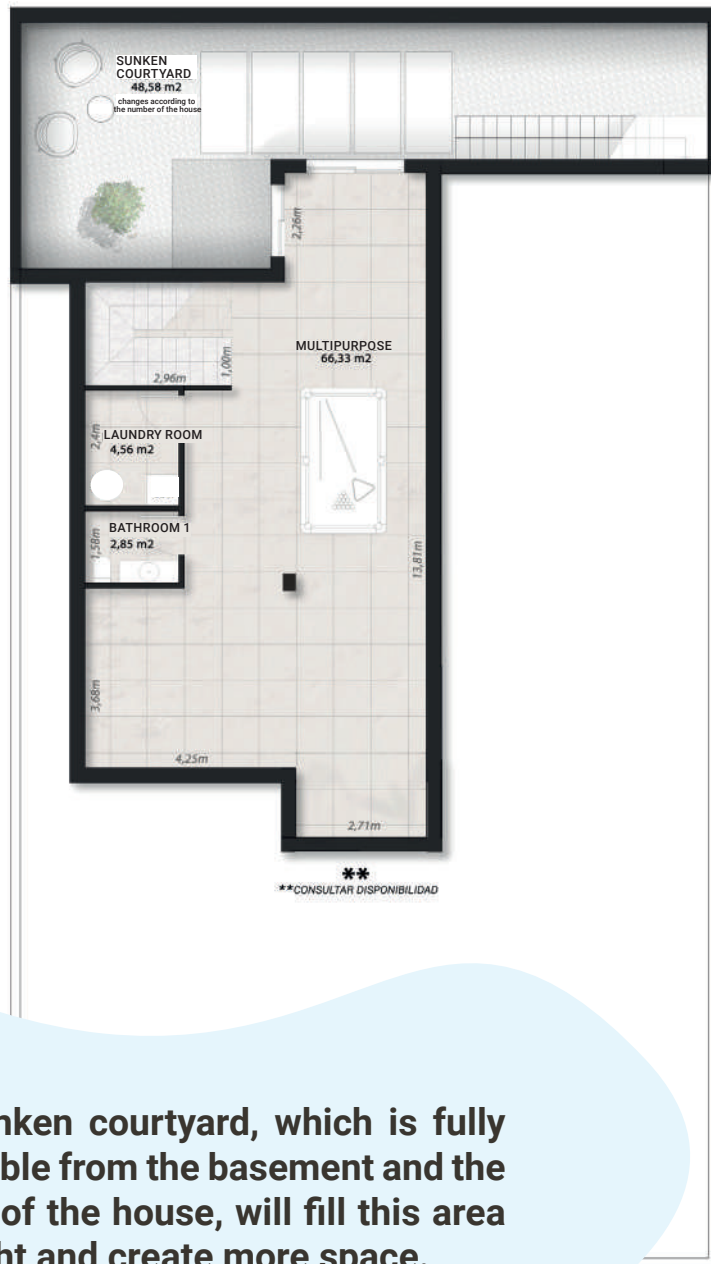
# Solarium



### Please note:

This document should be used as a guide only; changes might be made to it as the technical construction project progresses. The villas will be built in line with the building specifications established by the site manager without this affecting the quality. The furniture, gardening and other decorative elements that appear in the plans, except those specifically included in the furnishings, are simply to give you an idea of how you can decorate your house and they do not come with the property.

# Basement



Available in the odd number properties and as an extra in the even number properties.

## \*\*Basement + sunken courtyard

The villas that come with a basement and the sunken courtyard have lots of advantages, such as the extra space that can be used for recreational activities or for storage. The natural light and the ventilation provided by the sunken courtyard improves the air quality and it adds value to the property.

You can turn this area into the home cinema room, games room, personal gym, wine cellar, office... or whatever you can imagine. This extra space is particularly useful for anyone who is looking for a house that adapts to their changing needs.

**The sunken courtyard, which is fully accessible from the basement and the garden of the house, will fill this area with light and create more space.**

#### Please note:

This document should be used as a guide only; changes might be made to it as the technical construction project progresses. The villas will be built in line with the building specifications established by the site manager without this affecting the quality. The furniture, gardening and other decorative elements that appear in the plans, except those specifically included in the furnishings, are simply to give you an idea of how you can decorate your house and they do not come with the property.